

## Naval & Nuclear Products Division

Precision Manufacturing since 1962

[www.guilldefense.com](http://www.guilldefense.com)



Military Standard & Specification Compliant

### Guill Tool & Engineering Co., Inc.

10 Pike St.  
West Warwick, R.I. 02893  
phone: 401-828-7600  
fax: 401-823-5310  
sales@guilldefense.com

#### production machining

- CNC Lathes
- CNC Milling
- Materials:  
Stainless Steels, Monel, K-Monel, Inconel, Hastelloy, HY-80, 8Y-100, plastics and more.
- Large network of sub-contractors for special processes & turn key solutions.

#### toolmaking & prototype machining

- Wire & Die Sink EDM
- I.D. & O.D. Grinding
- Surface Grinding
- See facilities list on back

#### custom assemblies

- Weldments
- Machine Building
- Product Assembly
- Hydro Test up to 10,000 psi
- Air Test
- Turn Key Projects

#### flanges

Flanges up to 25" diameter made to your Specifications or Blueprints for the following industries:

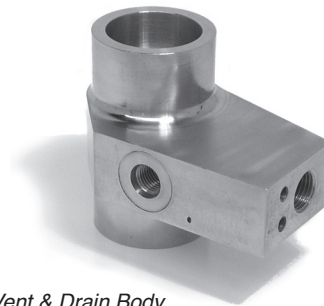
- Navy ships and submarines
- Commercial maritime
- Commercial nuclear
- Chemical
- Pharmaceutical
- Plastics
- Rubber



#### hand & bench tools

- Manufactured to your design
- Fiber optic cleavers
- Fiber optic splicers

#### special fittings and components



*Vent & Drain Body*

#### Nuclear Plant Material Special Emphasis Program (Level 1/SUBSAFE)

- Pipe Fittings
- Valves-Assemblies
- FSC: 4730, 4810 & 4820
- Machined Parts

#### engineering services

- Computer Flow Simulation (CFD)
- Solid Works
- AutoCad
- CAD/CAM
- Camworks
- Teksoft

#### blanket orders

Blanket orders for a variety of products such as:

- Turn key machining & assembly projects
- Custom hand & bench assembly tools
- Replacement parts

*Spline Shaft*



Large network of sub-contractors for special processes and turn key solutions.

Quality Systems are certified to ISO 9001 and conform to MIL-I-45208A. EB-2678 Calibration System is in accordance with MIL-STD-45662.

**CNC TURNING CENTERS**

**Doosan Puma 480  
CNC Lathe**  
60 HP / 25.6" Max. Turn Dia.  
Fanuc Series 211-TB Control

**Mori Seiki NL200Y**  
15 HP Spindle Drive  
5 HP Rotary Tool Drive  
x + y + z Drives  
14" Dia. x 20" Linear Travel  
Mitsubishi MSX-850 Control

**Daewoo  
Puma 350L**  
35 HP / 26" Swing x 82"  
Fanuc Series 18-T  
Conversational Control

**Mazak Quick Turn  
CNC Lathe**  
20 HP / 8" Chuck  
Mazatrol T. Control

**Mazak Quick Turn  
CNC Lathe**  
20 HP / 10" Chuck  
Mazatrol T. Control

**Mazak Quick Turn  
CNC Lathe**  
25 HP / 10" chuck  
Mazatrol PC Fusion Control

**Methods CNC Turning Center  
Slant Model 4B**  
30 HP / 18.31" Max. Turn Dia.  
12" Dia. Chuck / 10 Tool Position  
Fanuc #11TE Control

**Methods CNC Turning Center  
Slant Model 3B**  
25 HP / 15.74" Max. Turn Dia.  
10" Dia. Chuck / 12 Tool Position  
Fanuc #6TB Control

Bridgeport Romi EZ Path Lathe 8"x36"

**MANUAL MACHINES**

Engine Lathes

Bridgeport Vertical Mills

Horizontal Mills

**MACHINING CENTERS**

**Brown & Sharp Machining Center**  
25" x 40" with Y Axis  
40 Tool Changer

**Matsuura 560V Machining Center**  
20" x 40" x 22" with 4th axis  
30 tool changer

**Matsuura V1000 Machining Center**  
20" x 20" x 40" with 4th axis  
30 Tool Changer

**Matsuura MC-760V**  
20" x 20" x 40" with 4th axis  
30 Tool Changer

**Mori Seiki NMV 5000DCG 5 Axis  
Machine Center**  
x Travel 28.7"  
y Travel 20.1"  
z Travel 20.1"  
b Travel +160. to -180.  
c Travel +/-360 Degrees  
500 MM Dia. Table  
Max. Dia. Capacity 27.6"  
60 Tool Changer

**E.D.M. MACHINES**

**Agie-Charmilles Hole Popper**  
As small as .010 Start Hole  
x, y, z 11.8" x 7.87" x 11.8"  
Work pc. capacity 19.6" x 15.7" x 9.5"

**Elox (Ram Type)**  
#8-62/TC100 Control

**Elox (Wire Type)**  
Series P.SYS.6 - Wire 8" x 16" x 16"

**Agie (Ram Type)**  
Mondo 2  
Die sink 12" x 14" x 20"  
Elec.Z Axis  
14" Color Graphic Control

**Charmilles 230 (Wire Type)**  
Robofil 5 axis E.D.M.  
x travel 13.770  
y travel 8.66  
u travel 13.770  
v travel 8.66  
z travel 8.66

**Charmilles 330F (Wire Type)**

Robofil 5 axis E.D.M.  
x travel 15.750  
y travel 11.800  
z travel 15.750  
u travel 19.680

**Charmilles 440 (Wire Type)**

Robofil 5 axis E.D.M.  
x travel 21.650  
y travel 13.770  
u travel 21.650  
v travel 13.770  
z travel 15.750

**PRECISION GRINDING MACHINES**

**JMC 1000H ID - OD Grinder**  
20" D x 40" L

**Chevalier ID - OD Grinder**  
14" D x 40" L

**Okamoto Surface Grinder**  
12" x 24" with 8" Rotary Attachment

**Surface Grinders**  
up to 8" x 28"

**INSPECTION EQUIPMENT**

**Nikon MM-40 Measuring Microscope**

**Brown & Sharp Validator**  
18" x 32" x 32" Axis Capacity

**Brown & Sharp Tessa Microhite 600**  
Height Gauge - 24" Height Capacity

**Brown & Sharp Hite-Tronic**  
Height Gauge - 36" Height Capacity

**Taylor Hobson Profilometer Surtronic 3**  
Surface Finish Gauge

**Rockwell Hardness Tester**

**Granite Surface Plates**

**Optical Comparitors**

**Electronic Height Gages**

**VISIT OUR  
HIGH-TECH  
MANUFACTURING FACILITY**